

Objective 3:

Building a child-friendly city

– improving outcomes for children and families

Ofsted inspected Children's Services in early 2015, and gave them a rating of good. This recognised our improvement over the last five years and confirmed that the partnership is improving outcomes for children and young people across the city.

BEST START

- 'Leeds has successfully integrated local authority, health and third sector services which have evolved into a new early help service, underpinned by the 'Best Start' strategy.' (Ofsted inspection of Children's Services, March 2015)
- The percentage of mothers maintaining breastfeeding at six-eight weeks has increased compared to previous years, helping improve health outcomes for both mothers and infants.

BASIC NEED/SCHOOL PLACES

- All new school places created for the 2015/16 academic year were in good or outstanding schools.
- More children were offered one of their five school preferences for the 2015/16 academic year than the previous year. Demand pressures remain especially in some localities, where work is going to ensure both immediate and long term solutions.

KEY STATS – 2014-15

5.6% reduction

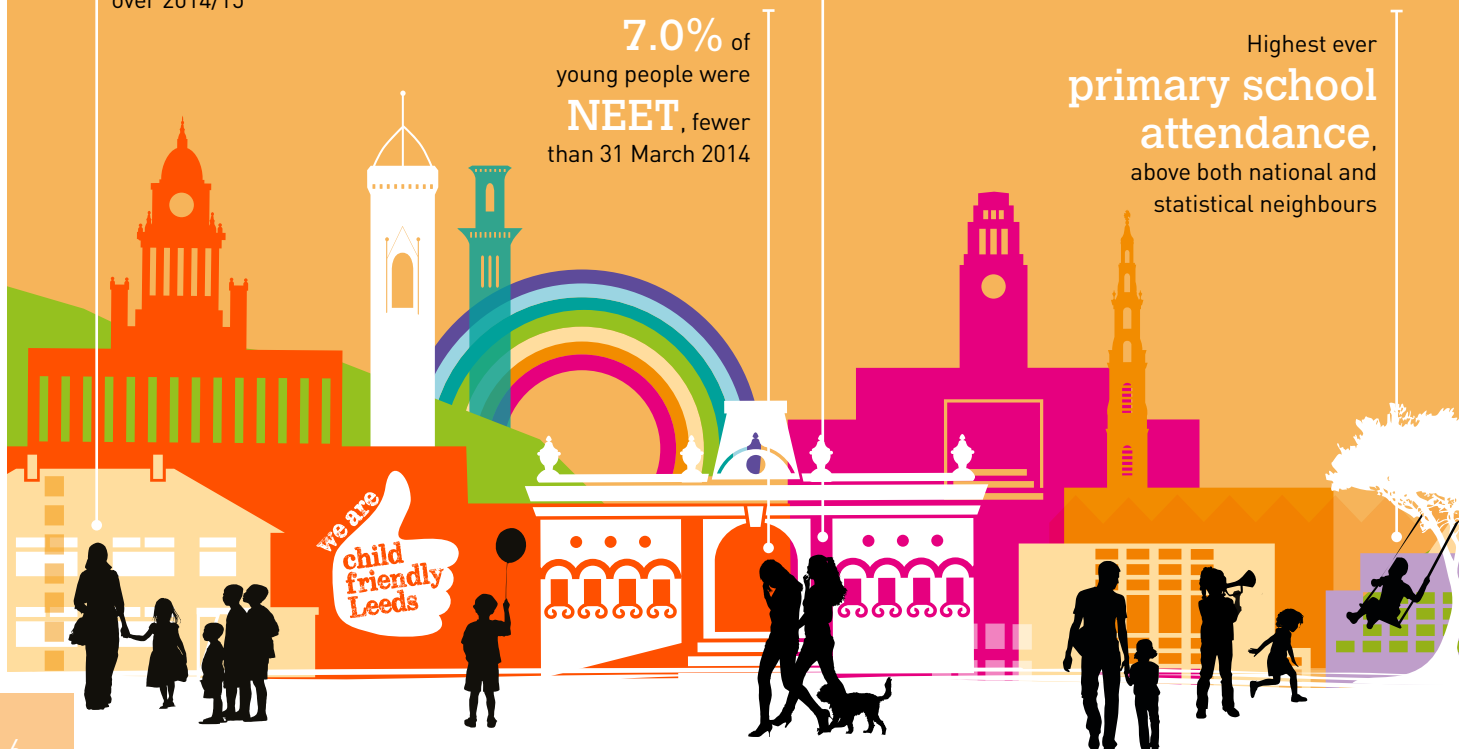
in the number of children
looked after
over 2014/15

7.0% of

young people were
NEET, fewer
than 31 March 2014

A reduction in the
number of young people who were
not known (NEET)

Highest ever
**primary school
attendance**,
above both national and
statistical neighbours



CHILDREN AND YOUNG PEOPLE DO WELL AT ALL LEVELS OF LEARNING AND HAVE THE SKILLS FOR LIFE

- School attendance levels in Leeds are at their highest. However, despite the improvement in secondary school attendance, unauthorised absence remains a challenge.
- Improvements have been seen in exam results at the majority of key stages, with key stage four being the exception. At all phases, the concern is that Leeds' improvements are not outpacing national improvements; therefore the gap is not closing.
- The number of young people not in education, employment or training (NEET) is lower than the same period last year.

CHILDREN AND YOUNG PEOPLE ARE SAFE FROM HARM

- 'Safeguarding children and young people is a key priority within this strategy and the Leeds approach is underpinned by strong governance arrangements and committed city-wide partnerships' (Ofsted inspection of Children's Services, March 2015)
- There are fewer children looked after than at any point since 2006 and Ofsted provided confidence that our processes and strategy are right. We need to stay focused supporting families to reduce the number of children needing to enter care and to find permanence for those already in care.
- Phase one of Families First worked with 2,190 families over the three-year programme and all involved demonstrated positive, sustainable change in the family.
- £4.85 million was secured from a bid to the innovation fund to transform social work in the city by expanding the family group conferencing service and rolling out restorative practice.

